

# OER Project: 2006 Form B and 2010 Form B

**Veronica Seder, Caleb Athens &  
Tara Spridco**

## Prompt 1

2006, Form B: In many work of literature, a physical journey—the literal movement from one place to another—plays a central role. Choose a novel, play, or epic poem in which a physical journey is an important element and discuss how the journey adds to the meaning of the work as a whole. Avoid mere plot summary.

# Deconstruction

## Little Question

- Identify a book where a physical journey largely contributes to character development and literary progression.

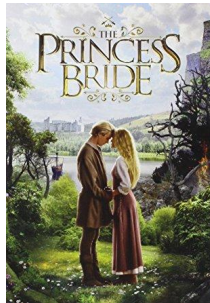
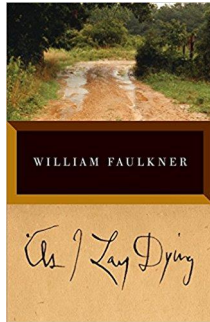
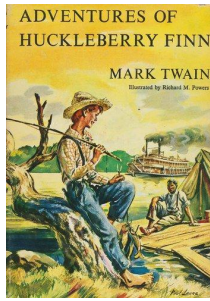
## Big Question

- How does the author deepen the theme of the book through incorporating the journey?

# Work of Fiction

1. *Adventures of Huckleberry Finn* by Mark Twain
  - This book is about Huck Finn and Jim's journey to attain freedom by floating down the Mississippi River.
2. *As I Lay Dying* by William Faulkner
  - This book is about a family's journey to bury their deceased matriarch where she was born and raised.
3. *Princess Bride* by William Goldman
  - This book includes several overlapping physical journeys including Buttercup's journey as a captive with the band of robbers, Wesley's journey to rescue Buttercup, and the reunited lovers' journey through various ominous places.

We will be using *As I Lay Dying*



## Introductory Paragraph

In William Faulkner's Southern Gothic novel, *As I Lay Dying*, the five children and husband of Addie Bundren journey to Jefferson to bury their recently deceased matriarch. During the journey, the characters' responses to the obstacles that come their way as well as their personal insight on the occurrences amplify the thematic ideas embedded throughout the book. Through the inclusion of the prolonged and tumultuous journey, Faulkner reveals the consequences of refusing to accept mortality and rebelling against common sense for the sake of an ideal.

# Essay Organization

The essay would be organized by spotlighting a few of the major characters who were close to Addie. Each body paragraph would be designated to a different protagonist. In discussing these characters, we would strictly rely on details from the journey in order to abide by the prompt. These details would illustrate the character's development and how it weaves back into the theme Faulkner is constructing. We would conclude the essay with tying together the ideas we developed in each of the character's paragraphs and how it emphasizes the theme.

## Prompt 2

2010, Form B: “You can leave home all you want, but home will never leave you.”  
-Sonsyrea Tate

Sonsyrea Tate’s statement suggest that “home” may be conceived of as a dwelling, a place, or a state of mind. It may have a considerable influence on an individual. Choose a novel or play in which a central character leaves home yet finds that home remains significant. Write a well-developed essay in which you analyze the importance of “home” to this character and the reasons for its continuing influence. Explain how the character’s idea of home illuminates the larger meaning of the work. Do not merely summarize the prompt.

# Deconstruction

## Little Question

- Identify a novel where a character's conception of "home" extends beyond the physical confines.

## Big Question

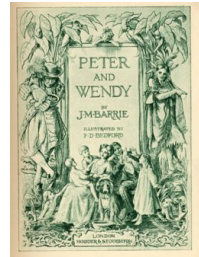
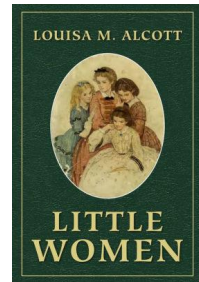
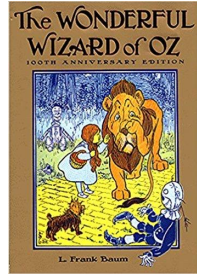
- How is the theme of the novel amplified by the character's inability to detach from their home even as they travel elsewhere?



# Work of Fiction

1. *The Wonderful Wizard of Oz* by L. Frank Baum
  - This is about Dorothy's journey through Oz after being swept away in a cyclone. Although she dislikes her life in Kansas, she realizes once removed from it that there is "no place like home."
2. *Little Women* by Louisa May Alcott
  - The four March sisters go on separate adventures as they are growing up during the Civil War. No matter where they go, they always find home in each other.
3. *Peter and Wendy* by J. M. Barrie
  - Even though Wendy is whisked off to the magical world of Neverland, she decides eventually that her place is at home with her mother.

We will be using *The Wonderful Wizard of Oz*



# Introductory Paragraph

In L. Frank Baum's novel *The Wizard of Oz*, four unlikely characters end up journeying to Oz in hopes of gaining wholeness. One character specifically, Dorothy, believes she will find completion once she is able to return to her home in Kansas she was once felt disconnected from. By placing an emphasis on Dorothy's evolving relationship home, Baum exemplifies the inherent importance of home to an individual.

# Essay Organization

We would organize this essay chronologically in order to address the various events that lead to Dorothy to uncover the true meaning of home. In order to draw emphasis to the change in perspective that Dorothy underwent, we would include the motifs that pop up throughout the course of the book that keep her tethered to Kansas. To end the essay, we would ensure it all ties back to the “big picture question” about the theme by reconnecting all our claims made in the subsequent paragraphs back to the author’s theme.